



High Road, London, N2

£499,950

Finchleys are pleased to offer this characterful 2 bedroom ground floor maisonette with private rear garden in East Finchley, N2.

With its own private entrance, the property welcomes you into a well-designed space that features a spacious reception room, perfect for relaxation or entertaining guests.

The flat comprises two inviting bedrooms, providing ample space for a small family or professionals seeking a home office. The contemporary bathroom is thoughtfully appointed, ensuring a pleasant experience for daily routines.

One of the standout features of this property is the impressive 70-foot private garden, a rare find in urban living. This outdoor space is ideal for enjoying sunny days, hosting barbecues, or simply unwinding in a tranquil setting.

Additionally, the flat benefits from a new 999 year lease, offering peace of mind for prospective buyers. With its modern finishes and practical layout, this property is a fantastic opportunity for those looking to settle in a lively area with excellent local amenities and transport links.

In summary, this flat on High Road is a charming and practical choice for anyone seeking a stylish home with the added bonus of a private garden.

Don't miss the chance to make this delightful property your own.

Offers Over

2  1  1  



**FINCHLEYS
ESTATES**

CLIENT FOCUSED. RESULTS DRIVEN.



- PRIVATE 70FT REAR GARDEN
 - NEWLY REFURBISHED
 - 999 YEAR LEASE
 - CHAIN FREE
 - GROUND FLOOR
 - 2 BEDROOMS
 - HIGH CEILINGS
 - LOTS OF NATURAL LIGHT

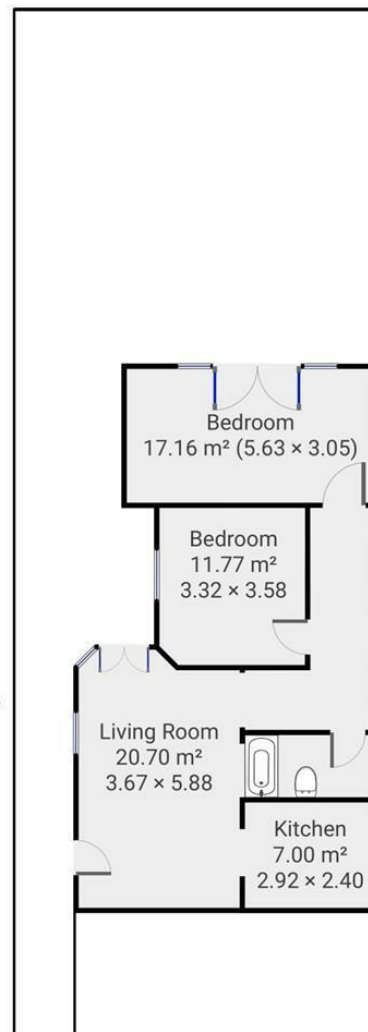


High Road, N2

Total Area: 72.1 sq metres / 776 sq ft approx.

Please note: Whilst every attempt has been made to ensure the accuracy of our floor plans please note that measurements are approximate and no responsibility is taken for any error, omission or misstatement. The floor plans we produce are for representation purposes only and should be used as such by any prospective purchaser. No guarantee is given on the total square footage of the property if quoted on our plans. Any figure given is for initial guidance only and should not be relied on as a basis for valuation purposes.

Garden extends to 28 metres approx. from this point





11 STATION ROAD
FINCHLEY
LONDON
N3 2SB
02083461180